

# The SS-820 Bi-Directional Amplifier

Add Sound to Your Security System



## Product Overview

The SS-820 is a class D 40W max amplifier that supports 2 way audio in security systems.

Designed to integrate with IP cameras and DVRs, the SS-820 will drive an 8 ohm speaker or horn and amplify a non-powered microphone. It is compatible with most security technologies used today.

## Commonly Used In

The SS-820 is commonly paired with 8 Ohm speakers and horns for use in:

- Perimeter Protection
- Car Dealerships
- Parking Lots
- Safe Cities

In these applications, audio is frequently used for announcements, verbal warnings, and emergency alerts.



The SS-820 Bi-Directional Amplifier is proudly Made in the USA.

## At A Glance

### Product

- Class D 40W Max Amplifier
- Pair with 8 Ohm Speakers
- Supports 2 Way Audio
- IP68 Enclosure

### Uses

- Perimeter Protection
- Car Dealerships
- Parking Lots
- Safe Cities

## Technical Specifications

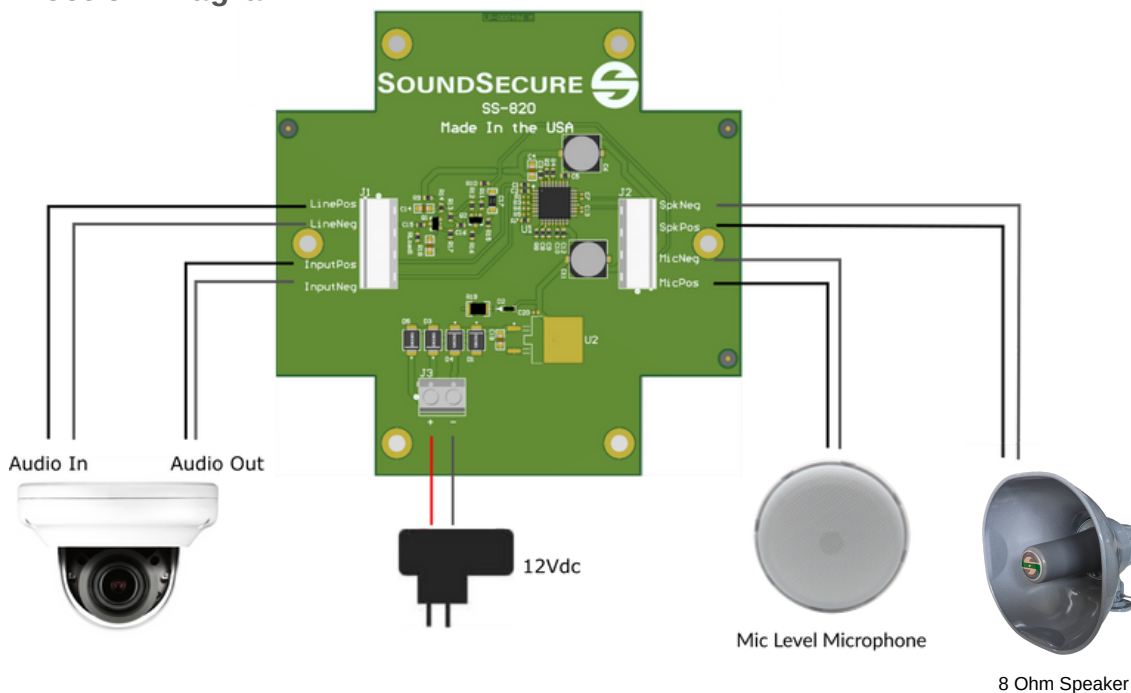
Supply Voltage	10-26Vdc 12V Recommended
Current Drain	4A Max
Output Power	40W Max
Output Impedance	8 $\Omega$
SNR	102 dB
Efficiency	92%
Operating Temp	-40° - 85° C
Mic Output	0dB $\pm$ 3, Line Level
Mic Impedance	2.2 k $\Omega$
Environmental Rating	IP 68
Dimensions	4.75"L x 4.75"W x 2.75"H
Weight	1 lb
Enclosure Material	Polycarbonate

# The SS-820 Bi-Directional Amplifier

## Installation Diagrams

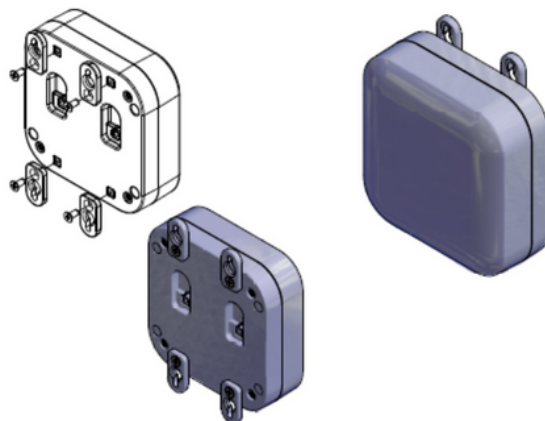


### Connection Diagram



### Enclosure Mounting

1. Install mounting feet to enclosure using supplied screws.
2. Mount enclosure to surface or object. #8 pan head screws are recommended (not included).



## The SS-820 Bi-Directional Amplifier

### Installation Instructions



#### To Connect the SS-820 to an IP Camera:

- 1) Using 18/2 AWG shielded cable, connect the camera's audio out to the SS-820 Input Positive and Input Negative terminals. Connect the signal wire to positive and the ground wire to negative. When a drain wire is used, connect the drain wire in parallel with the negative wire on both ends. If using a non-powered microphone for 2 way audio, connect the camera's audio in to the SS-820 Line Positive and Line Negative terminals.
- 2) Connect a compatible 8 Ohm speaker or horn to the SS-820 terminals marked Speaker Positive and Speaker Negative. Connect the signal wire to positive and the ground wire to negative. When a drain wire is used, connect the drain wire in parallel with the negative wire on both ends. If using a non-powered microphone, connect the microphone signal wire to "Mic Pos" and the ground wire to "Mic Neg."
- 3) Connect 12Vdc power to the power input terminal marked "+" and "-". A green LED will illuminate upon connection to power.
- 4) Configure the audio settings in your IP camera to enable audio.