



The SS-810 Horn

Add Sound to Your Security System

Product Overview

The SS-810 Horn is a high efficiency speaker delivering intelligible audio with 30 Watts of power. When paired with the SoundSecure SS-820 Bi-Directional Amplifier, the SS-810 provides a powerful voice-down solution for remotely monitored security systems.

Commonly Used In

The SS-810 provides deterrent and advisory announcements when installed in

- Perimeters & Secured Areas
- Car Dealerships
- Parking Lots
- Safe Cities

In these applications, audio is frequently used for verbal warnings, and emergency alerts.



The SS-810 Horn is proudly
Made in the USA.

At A Glance

Product

- 8 Ω Horn
- 30 Watts Continuous Power
- IP34 Rated

Uses

- Perimeter Protection
- Car Dealerships
- Parking Lots
- Safe Cities

Technical Specifications

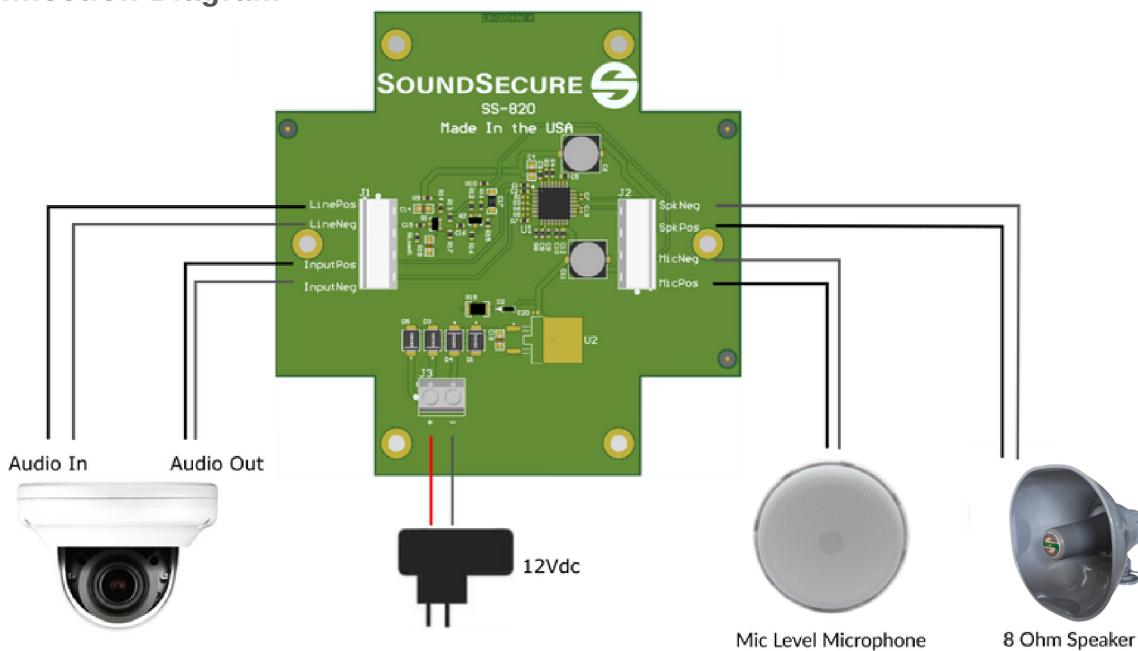
Frequency Response	300Hz - 12kHz
Sensitivity	108dB @ 1W/1M
Dispersion	60 Degrees
Power Rating	30W
Operating Temp Range	-40C - 70C
Environmental Rating	IP 34
Dimensions	11"L x 10"W x 10.5"H
Weight	6 lbs
Enclosure Material	Metal with Epoxy Finish

The SS-820 Bi-Directional Amplifier

Installation Diagrams

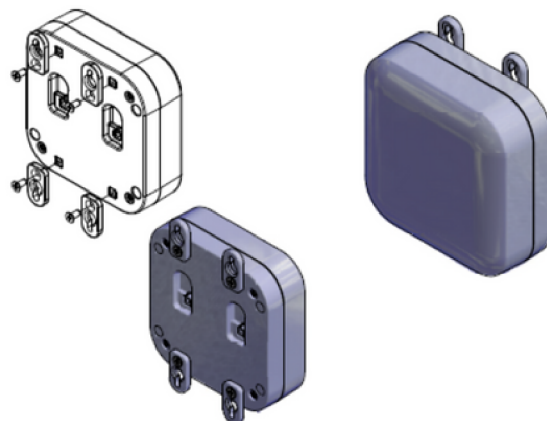


Connection Diagram



Enclosure Mounting

1. Install mounting feet to enclosure using supplied screws.
2. Mount enclosure to surface or object. #8 pan head screws are recommended (not included).



The SS-820 Bi-Directional Amplifier

Installation Instructions



To Connect the SS-820 to an IP Camera:

- 1) Using 18/2 AWG shielded cable, connect the camera's audio out to the SS-820 Input Positive and Input Negative terminals. Connect the signal wire to positive and the ground wire to negative. When a drain wire is used, connect the drain wire in parallel with the negative wire on both ends. If using a non-powered microphone for 2 way audio, connect the camera's audio in to the SS-820 Line Positive and Line Negative terminals.
- 2) Connect a compatible 8 Ohm speaker or horn to the SS-820 terminals marked Speaker Positive and Speaker Negative. Connect the signal wire to positive and the ground wire to negative. When a drain wire is used, connect the drain wire in parallel with the negative wire on both ends. If using a non-powered microphone, connect the microphone signal wire to "Mic Pos" and the ground wire to "Mic Neg."
- 3) Connect 12Vdc power to the power input terminal marked "+" and "-". A green LED will illuminate upon connection to power.
- 4) Configure the audio settings in your IP camera to enable audio.